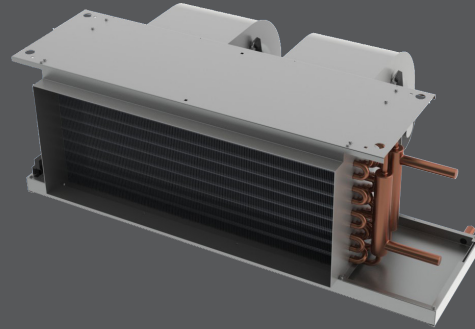


Horizontal High Output Series

fan coils

HHC

- Performance AHRI Certified to Standard 440
- ETL-Listed. Constructed in compliance with ANSI/UL 1995 Standard
- All casing sheet metal components fabricated of 18GA G90 galvanized steel
- High-efficiency 3-row coil suitable for a 2-pipe system
- Coil manual air vent
- Multi-speed motor(s) of the permanent split capacitor (PSC) type
- Double Width Double Inlet (DWDI) direct driven blower(s) of the whisper quiet type
- Controls installed in a single control box suitable for single power supply
- Single wall condensate pan in galvanized steel, thermally protected on the outside*
- 1" discharge air flange



HHC



apartments

hotels / motels

AVAILABLE MODEL:

HHC

OVERVIEW

Factory assembled, horizontal blow-thru, high-output HHC ducted fan coils are designed for concealed installations above ceilings with ducted air discharge and suitable for projects such as hotels, motels, condominiums and general commercial applications.

OPTIONAL FEATURES INCLUDE

- 4-, 5- And 6-row coils for 2-pipe systems
- Single block 2, 3, 4 and 5 rows CW with 1 row re-heat or pre-heat coils for 4-pipe system applications (6 rows max)
- Single block 2, 3, and 4 rows CW with 2 rows re-heat or pre-heat for 4-pipe system applications (6 rows max)
- LH or RH pipe connections entry
- Motor voltage suitable for 208V, 230V or 277V1Ph/60Hz power supplies
- Thermostat and Accessories [Accessories on page V71]
- Single power supplies disconnect switch and fuses
- Automatic 2-pipe changeover switch for heating and cooling applications
- Electric heaters
- HW Standby electric heater auto changeover switch
- Valve Packages [Accessories on page V71]
- Condensate pan options:
 - » Single wall condensate pan manufactured in 20GA 304 Stainless Steel



See website for Specifications

- » Double wall construction consisting of outer and inner shins
- » Condensate pan overflow safety switch
- » Condensate pan safety overflow connection



A Participating Corporation in the
AHRI 440 Certification Program